

Do you vote by post in England?

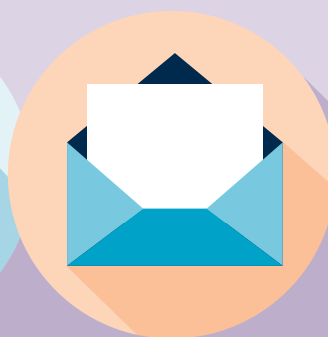
If so, you have to re-apply every 3 years



If you applied for a postal vote on or before 30 January 2024, you have to re-apply by **31 January 2026**



If you don't re-apply by then, your postal vote will expire



Re-apply for a postal vote at:
gov.uk/apply-postal-vote



You can re-apply for a postal vote

Apply online or by completing a paper form:



Online at:

gov.uk/apply-postal-vote



or download and fill in a postal
vote application form and send
it to your local council

To request a postal vote
application form, or for
help applying, contact
your local council:

Find out more: **electoralcommission.org.uk/ways-to-vote**